

1

2

3

4

5

6

E

D

C

B

A

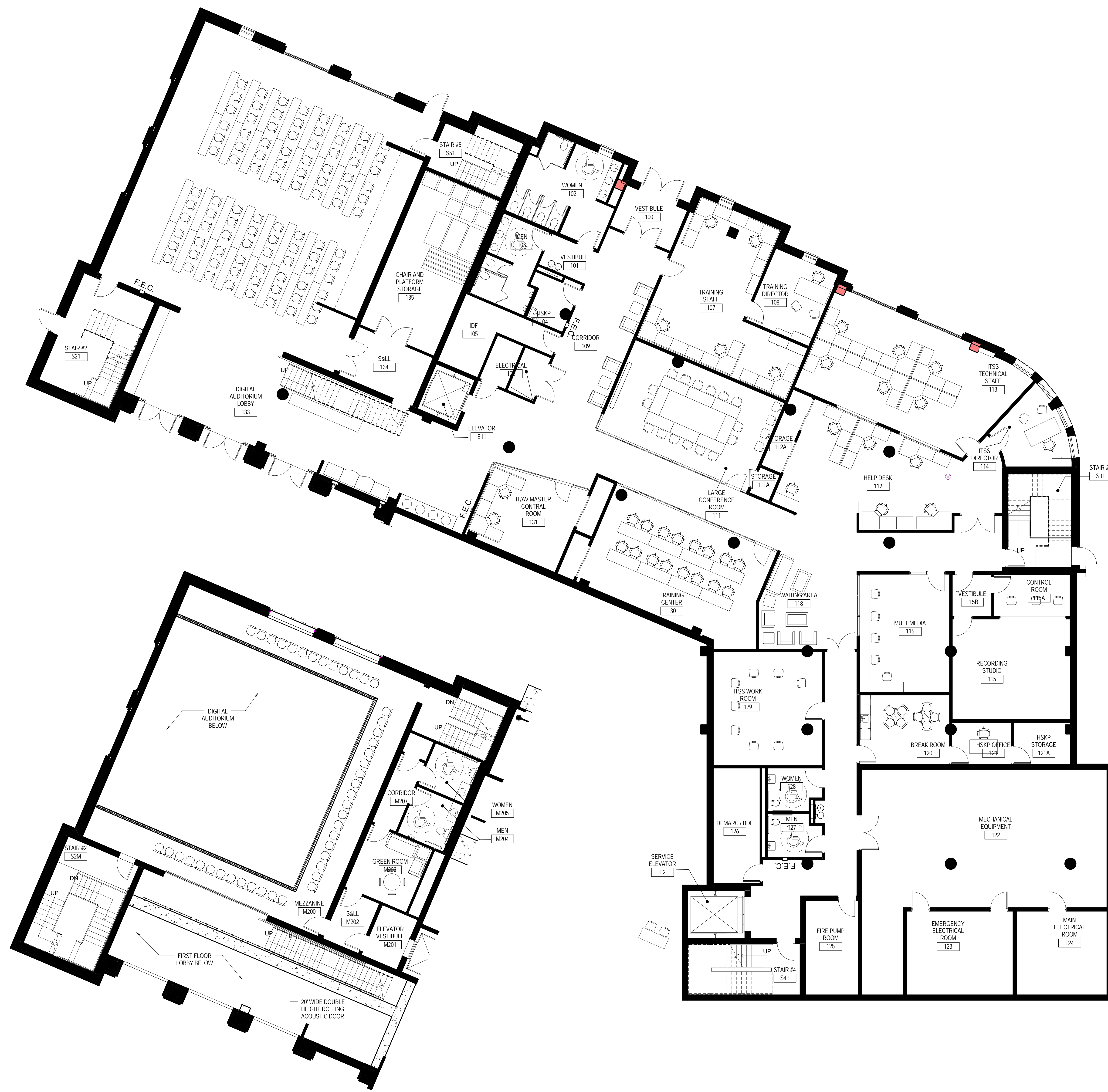
E

D

C

B

A



**A2** MEZZANINE FLOOR PLAN (ELEV 111')  
 1/8" = 1'-0"  
 0 8 16 24



**A4** FIRST FLOOR FURNITURE PLAN (ELEV 102')  
 1/8" = 1'-0"  
 0 8 16 24



CONSULTANT

UNIVERSITY OF MARY WASHINGTON  
 FREDERICKSBURG, VIRGINIA  
 INFORMATION AND TECHNOLOGY  
 CONVERGENCE CENTER  
 PROJECT CODE: 215-17671

ME PLAN

NO.	DATE	DESCRIPTION
03	07/18/10	PRELIMINARY DESIGN RESUBMITTAL
02	10/12/09	PRELIMINARY DESIGN SUBMITTAL
01	08/31/09	PRELIMINARY DESIGN REVIEW SET

MARK	DATE	DESCRIPTION
PROJECT NO.	08021	
DRAWN BY:	EHE	
CHECKED BY:	Checker	

SHEET TITLE:  
**FIRST FLOOR AND MEZZANINE FURNITURE PLAN**

SHEET NUMBER:  
**AF701**

1

2

3

4

5

6

E

D

C

B

A

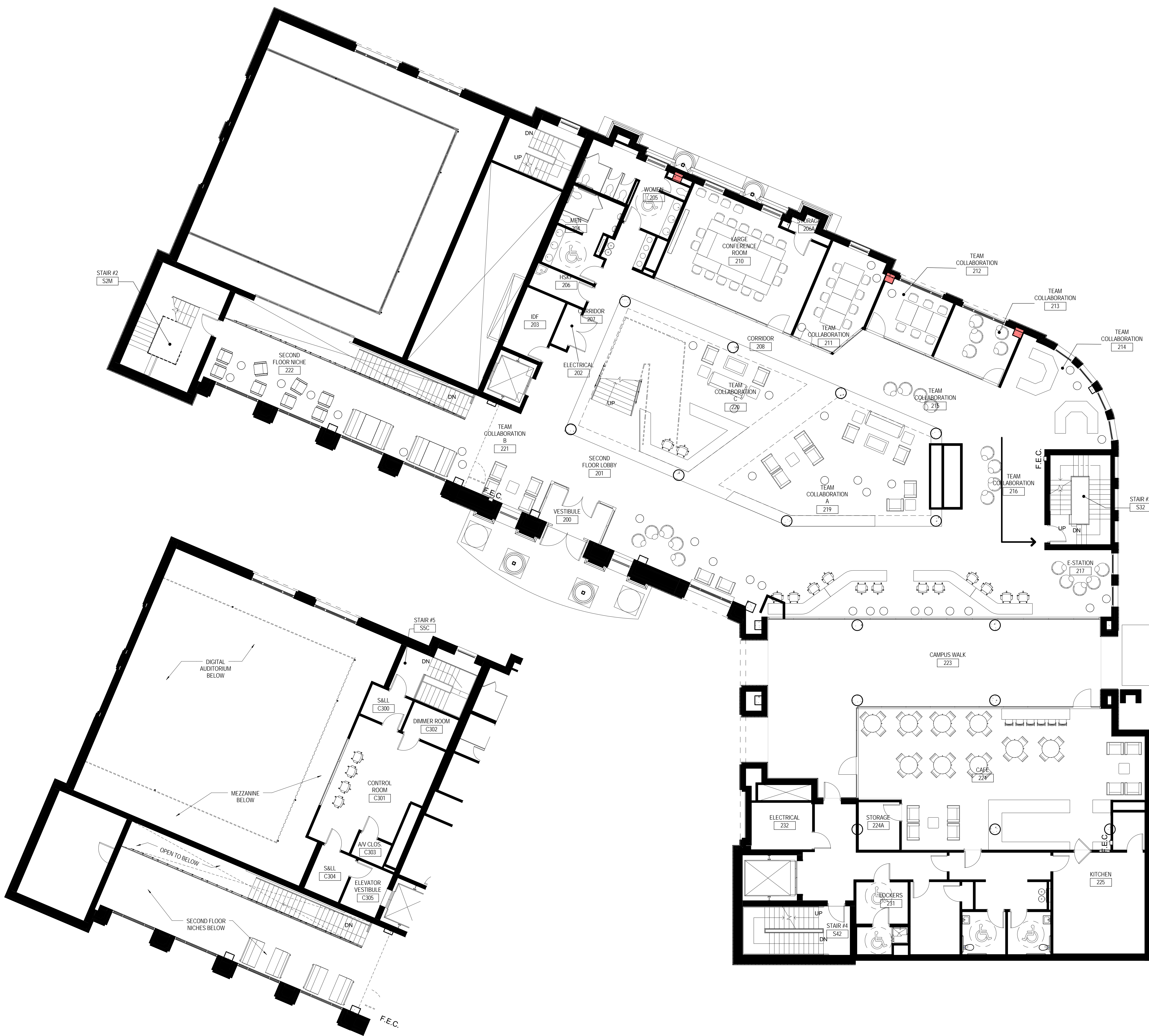
E

D

C

B

A



**A1** CONTROL ROOM FURNITURE PLAN (ELEV 120')  
1/8" = 1'-0"

**A4** SECOND FLOOR FURNITURE PLAN (ELEV 116')  
1/8" = 1'-0"

CONSULTANT

UNIVERSITY OF MARY WASHINGTON  
FREDERICKSBURG, VIRGINIA  
INFORMATION AND TECHNOLOGY  
CONVERGENCE CENTER  
PROJECT CODE: 215-17671

KEY PLAN

03	07/18/10	PRELIMINARY DESIGN RESUBMITTAL
02	10/12/09	PRELIMINARY DESIGN SUBMITTAL
01	08/31/09	PRELIMINARY DESIGN REVIEW SET

MARK	DATE	DESCRIPTION
PROJECT NO.	08021	
DRAWN BY:	EHE	
CHECKED BY:	Checker	

SHEET TITLE:  
**SECOND FLOOR AND CONTROL ROOM FURNITURE PLAN**

SHEET NUMBER:  
**AF702**

1

2

3

4

5

6

1

2

3

4

5

6

E

D

C

B

A

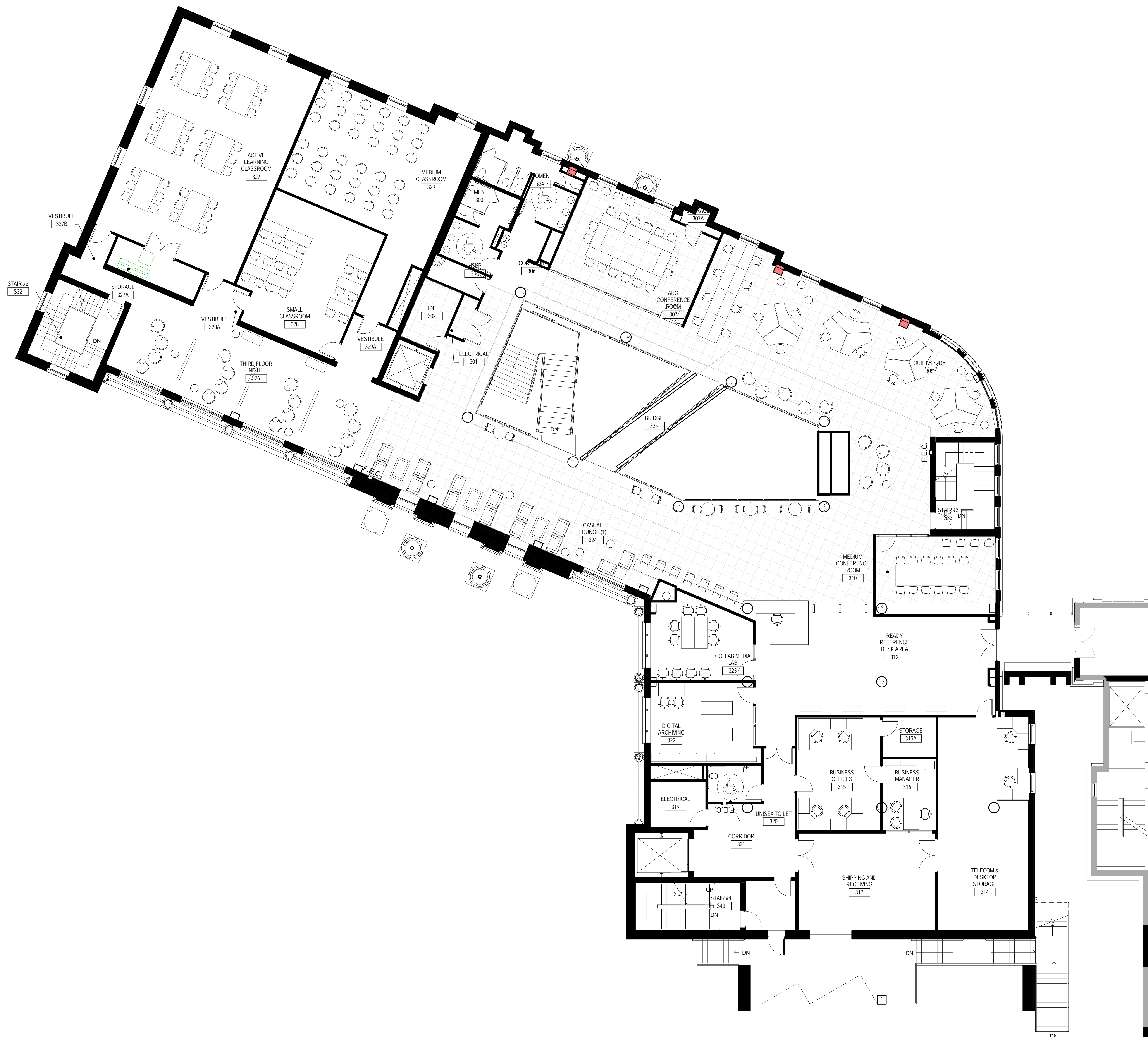
E

D

C

B

A



HANBURY EVANS WRIGHT VLATTAS + COMPANY  
ARCHITECTURE PLANNING

120 Atlantic Street Norfolk, VA 23510 T 757.321.9600 F 757.321.9601 www.hewv.com  
CREATING, PRESERVING, TRANSFORMING ENDURING SPACES

CONSULTANT  
**UNIVERSITY OF MARY WASHINGTON  
FREDERICKSBURG, VIRGINIA**  
INFORMATION AND TECHNOLOGY  
CONVERGENCE CENTER  
PROJECT CODE: 215-17671

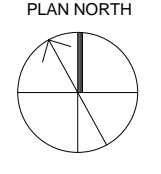
MARK	DATE	DESCRIPTION
03	07/18/10	PRELIMINARY DESIGN RESUBMITTAL
02	10/12/09	PRELIMINARY DESIGN SUBMITTAL
01	08/31/09	PRELIMINARY DESIGN REVIEW SET

PROJECT NO: 08021  
DRAWN BY: EHE  
CHECKED BY: Checker

SHEET TITLE:  
**THIRD FLOOR  
FURNITURE PLAN**

SHEET NUMBER:  
**AF703**

**A1** THIRD FLOOR FURNITURE PLAN (ELEV 130')  
1/8" = 1'-0"



PRINTED: 10/24/2011 5:37:46 PM

FILE LOCATION: H:\Data\Convergence Center\_Central\_ee\pelding.rvt

1

2

3

4

5

6

E

D

C

B

A

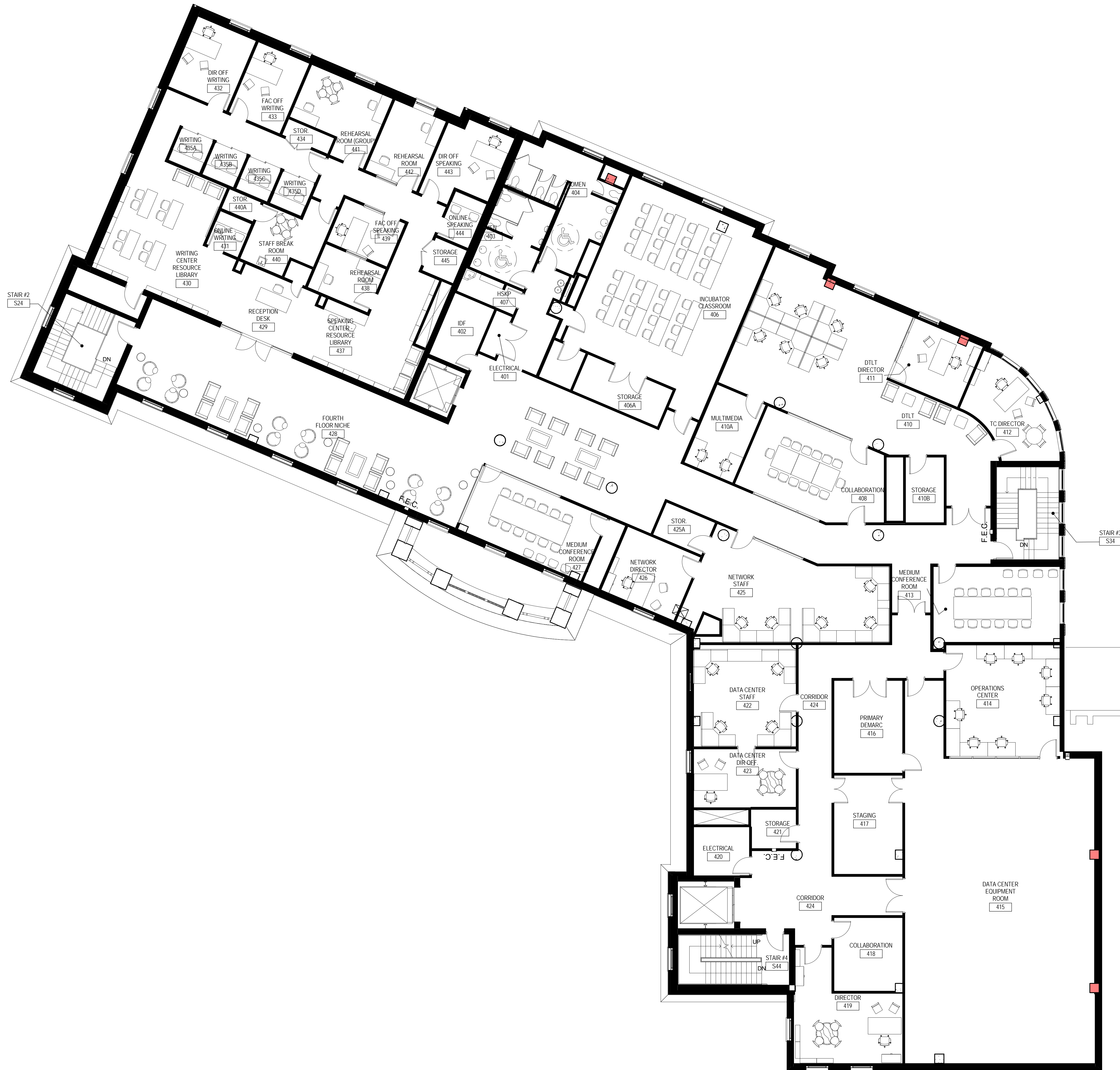
E

D

C

B

A



PRINTED: 10/24/2011 5:37:57 PM

FILE LOCATION: H:\Data\Convergence Center\_Central\_ee\pelding.nt

**A1** FOURTH FLOOR FURNITURE PLAN (ELEV 144')

1/8" = 1'-0"



1

2

3

4

5

6

CONSULTANT

**UNIVERSITY OF MARY WASHINGTON  
FREDERICKSBURG, VIRGINIA**  
INFORMATION AND TECHNOLOGY  
CONVERGENCE CENTER

PROJECT CODE: 215-17671

REVISION

NO.	DATE	DESCRIPTION
03	07/18/10	PRELIMINARY DESIGN RESUBMITTAL
02	10/12/09	PRELIMINARY DESIGN SUBMITTAL
01	08/31/09	PRELIMINARY DESIGN REVIEW SET

MARK DATE DESCRIPTION  
PROJECT NO: 08021  
DRAWN BY: EHE  
CHECKED BY: Checker

SHEET TITLE:  
**FOURTH FLOOR  
FURNITURE PLAN**

SHEET NUMBER:  
**AF704**

**HANBURY EVANS WRIGHT VLATTAS + COMPANY**  
ARCHITECTURE PLANNING

120 Atlantic Street, Norfolk, VA 23510 T 757.321.9600 F 757.321.9601 www.hewv.com  
CREATING, PRESERVING, TRANSFORMING ENDURING SPACES